

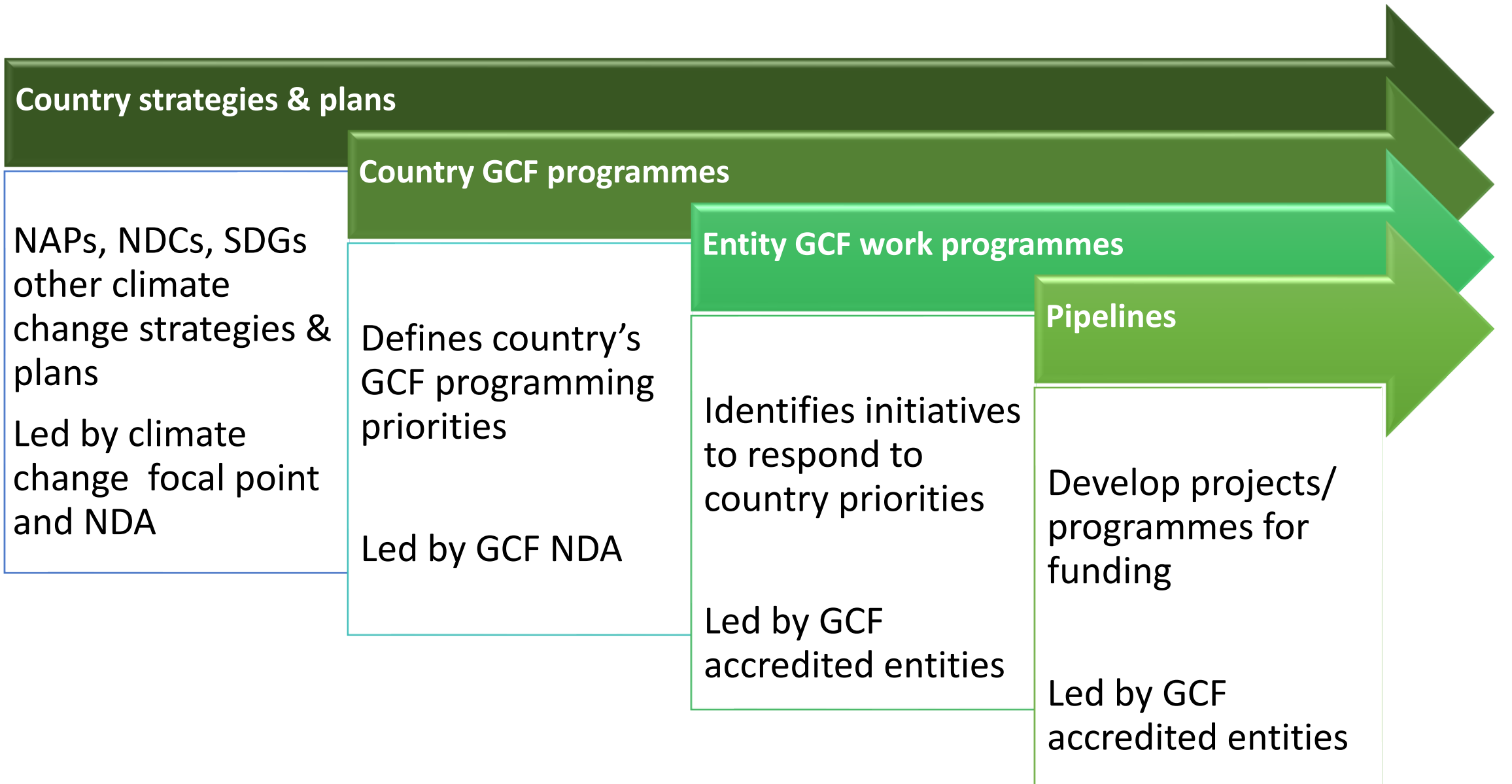


Project:” Support to the Republic of Moldova in the establishment and strengthening the National Designated Authority, development of the strategic framework, and preparation of country programme.”

Country Programme of the Republic of Moldova’s engagement with the Green Climate Fund, adaptation component.

Ala DRUȚĂ
Team Leader, GCF Project
Climate Change Office,
Ministry of Agriculture, Regional Development and
Environment of Moldova

Planning-programming continuum



Moldova's Climate Change Adaptation Framework

Republic of Moldova Moldova's National Determined Contributions -adaptation component setting out priority areas and ways to achieve the objectives (2016)

Climate Change Adaptation Strategy of Republic of Moldova and its Action Plan (2014-2020).

National Environmental Strategy and its AP (2014-2023).

National Biodiversity Strategy and its AP (2015-2020).

CCA measures mainstreamed into sectoral planning of *forestry, agriculture, health* sectors and socio-economic strategies of 6 pilot districts (2015-2022).

The Paris Agreement signed by the RM 21 September 2016, ratified by the Parliament 4 May 2017.

Submitted to the UNFCCC I-IV National Communications with associated GHG inventories and BURs 1,2.

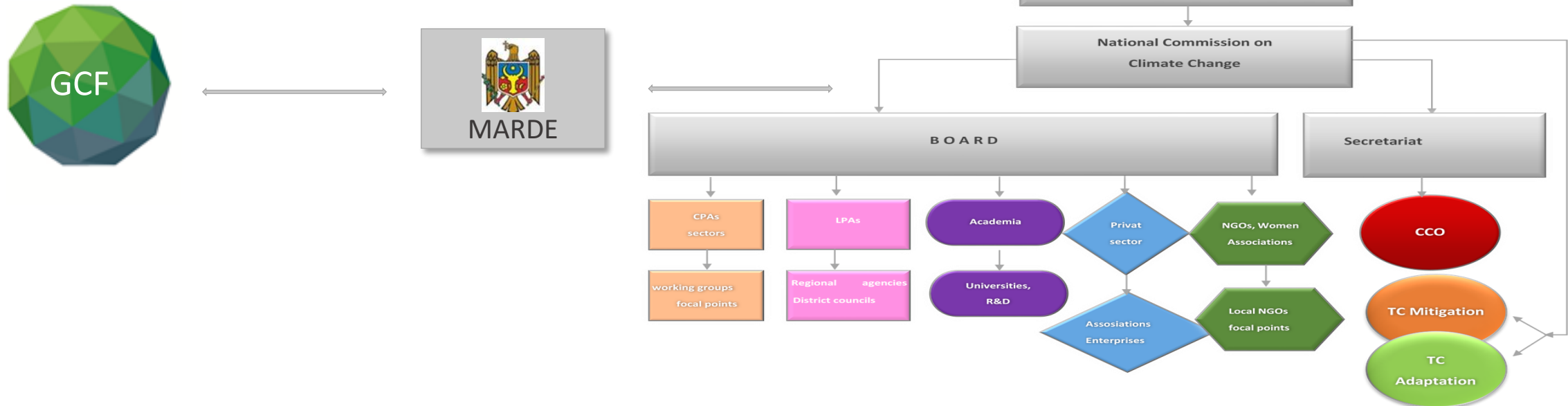
National Adaptation Plan 1 (2014-2017).

Climate Change Institutional Arrangement and Coordination Mechanism in support to adaptation programming



Climate Change Coordination Mechanism institutionalized through the *National Commission on Climate Change (NCCC)* will serve for NDA as a multi-stakeholder platform in the coordination of GCF related activities and their monitoring through its M&E system.

The Government Decision on operationalizing *Climate Change Coordination Mechanism* under the process of approval.



Using vulnerability assessments for development of Country Programme

Methods used in V&A assessments	Main findings of the assessments
Team based (experts + sectoral planners) ssectoral assessment of vulnerabilities in support to CCA incorporation into sectoral development planning.	Forestry, health, transport and energy sectors climatic, economic, environmental, social vulnerabilities. Findings used as baseline scenario for adaptation planning and implementation.
Sectoral and institutional capacity assessments (ICA)	System gaps, constraints, barriers and sectoral vulnerabilities identified in 7 key sectors. Findings used for development of Capacity Development Plan.
Vulnerability and Resilience Indicators Model (VRIM)	Sectoral main vulnerabilities and comparative analysis of sectors. Integration of indicators in a vulnerability index.
Livelihood Vulnerability Index (LVI)	Vulnerabilities at administrative-territorial unites of 32 dists.for 2006-2011 y.y. Mapping of distribution of vulnerability at district level.
Technology Needs Assessment	Technology Action Plans for agriculture and health sectors.
Indicator-based reporting at sector level	Data on sector level vulnerabilities and resilience.

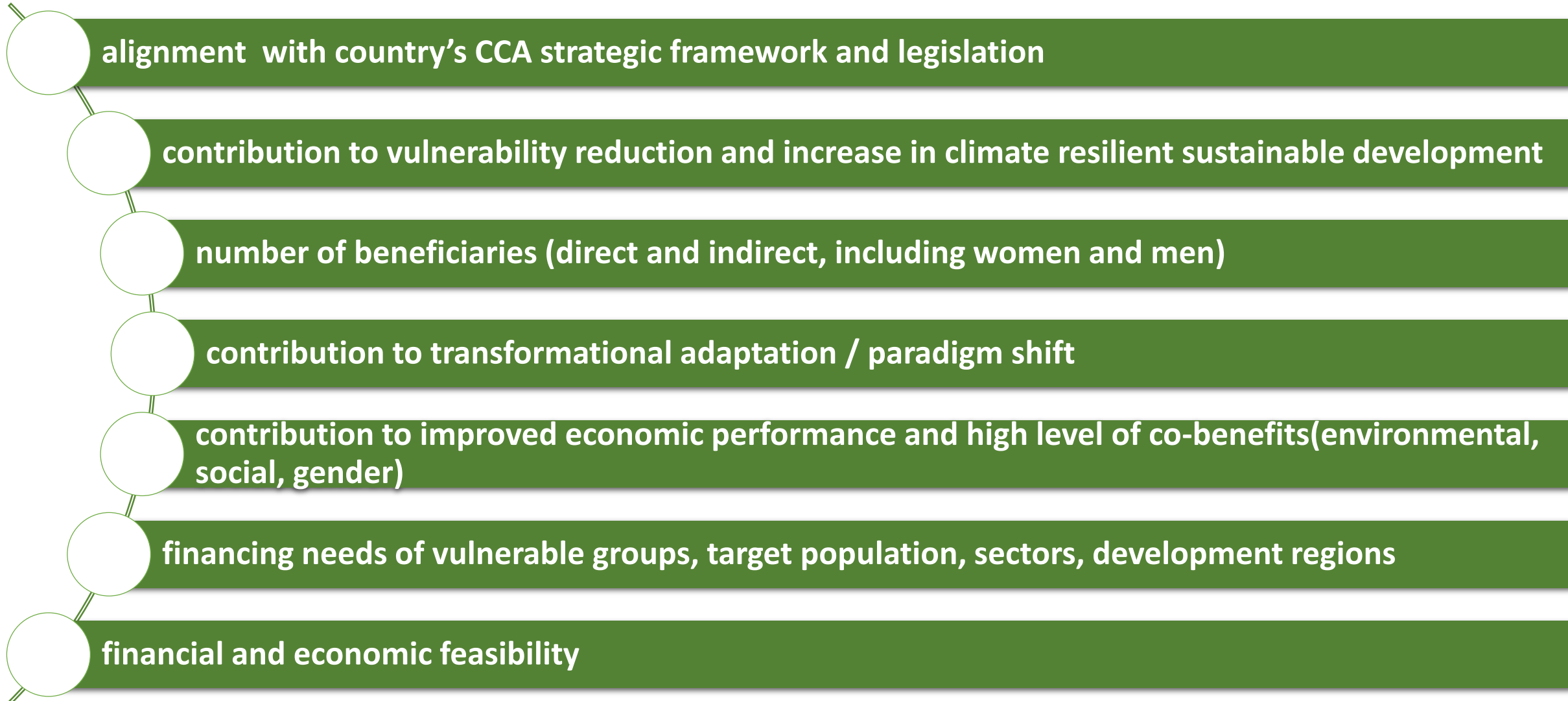
Stakeholder engagement in the consultation process of Moldova's Country Programme

- Two interministerial meetings;
- NDA staff involvement in the development of Country Programme;
- Bilateral meetings with private sector stakeholders;
- CPAs and LPAs stakeholder consultation workshops on adaptation investment areas;
- Round table consultation with private sector representatives on investment areas;
- Consultation of CP drafts through communication platform: websites, networking , social channels;
- Promotion of gender equitable stakeholders' consultation of Moldova's GCF Country Programme.



Prioritizing adaptation thematic areas

The main criteria used in the prioritization of adaptation thematic areas:



Indicative minimum benchmarks for GCF investment criteria, adaptation

Investment criterion	Indicative minimum benchmark
Impact potential	Number of direct beneficiaries at least 5,000
Paradigm shift potential	Potential of achieving scale up or replication is at least two times that of the proposed activity in the targeted area;
Sustainable development potential	Significant level of co-benefits projected in at least two of the four following areas: environmental, social, economic or gender-sensitive development
Needs of the recipient	Clear evidence that the Fund's intervention addresses the lack of alternative sources of financing or institutional capacity
Country ownership	No objection letter received from National Designated Authority; and ☐ Demonstration of alignment with a country's climate strategy or plan
Efficiency and effectiveness	Programme/project financial viability and other financial indicators

Top prioritized adaptation thematic areas

Sectors	Thematic areas
Agriculture	Building climate resilience of the agriculture sector through: <ul style="list-style-type: none">- Sustainable soil management (conservation, precise, ecologic agriculture practices)- Promotion of efficient irrigation systems- Crop diversity and resistance- Increased food security- Integrated food-energy systems for Climate-Smart agriculture
Water Resources	Promote climate resilient water management through: <ul style="list-style-type: none">- Water resources assessment, supply augmentation and demand management, considering social and gender aspects- Efficient water treatment and reuse- Management of extreme events (flooding, drought)
Forestry	Promote sustainable natural resources management through: <ul style="list-style-type: none">- Afforestation/reforestation, considering the ecosystems- Sustainable forestry management and ecosystem services- Ecological restoration of degraded pastures
Health	Increase climate resilience of health system to identify, monitor, respond and prepare for changes in health and disease burdens related to the climate of women and men (of different ages, abilities, social status, place of residence) through: <ul style="list-style-type: none">- Improved health services to vulnerable groups of the population- Hospital infrastructure for operationalization to green standards- Prevention, early warning, management and overcoming the impact of extreme weather events (heat, cold, floods)

Top prioritized adaptation thematic areas

Sectors	Thematic areas
Transport	<p>Promote clean and efficient transport in the country through:</p> <ul style="list-style-type: none">- Resilient urban infrastructure to reduce exposure to climate hazards- Climate proofing of transport infrastructure (roads, bridges, viaducts, railways, runways)- Adopt climate resilient codes, standards, and related instruments- Rural population access to climate resilient road system, which takes into account social, age and gender aspects.
Energy	<p>Ensure the country's energy security through:</p> <ul style="list-style-type: none">- Climate proofing of energy system infrastructure- Ensure the functioning of infrastructure and the energy sector on the occurrence of any climatic events- Promotion of water-energy-land nexus with emphasis on renewable sources of energy
Cross-sectoral	<p>Enhanced resilience of communities of Moldova to adverse effects of CC taking into account the social and gender aspects.</p>

High priority investments in climate change adaptation of Moldova

Sector	High priority investments through 2025	Estimated costs
Agriculture	Sustainable soil management (conservation, precision, eco agri practices, other)	260 MM
	Rehabilitation/upgrading of centralized irrigation systems, rehabilitation/modernization of drainage infrastructure in irrigated areas, rehabilitation and building of ground water catchment infrastructure.	490 MM
Water resources	Water management at basin river (Nistru , Raut), Improving the efficiency of the municipal and industrial water supply system by reducing the losses by 10%, flood control	198 MM
Health	Increase the resilience of medical institutions to climate change and develop green medical services, prevention, early warning, management and overcoming the effects of extreme weather phenomena (heat, cold, floods) due to climate change, prevention and control of infectious diseases influenced by climate change.	112 MM
Forestry	Ecological rehabilitation and expansion of forests and forest belts, afforestation of lands within riparian areas of rivers, restoration of degraded pasturelands, afforestation of degraded lands through erosion processes.	170 MM
Energy	Upscaling of energy efficiency through the PV system	52 MM
Transport	Rural population access to improved road system	115 MM

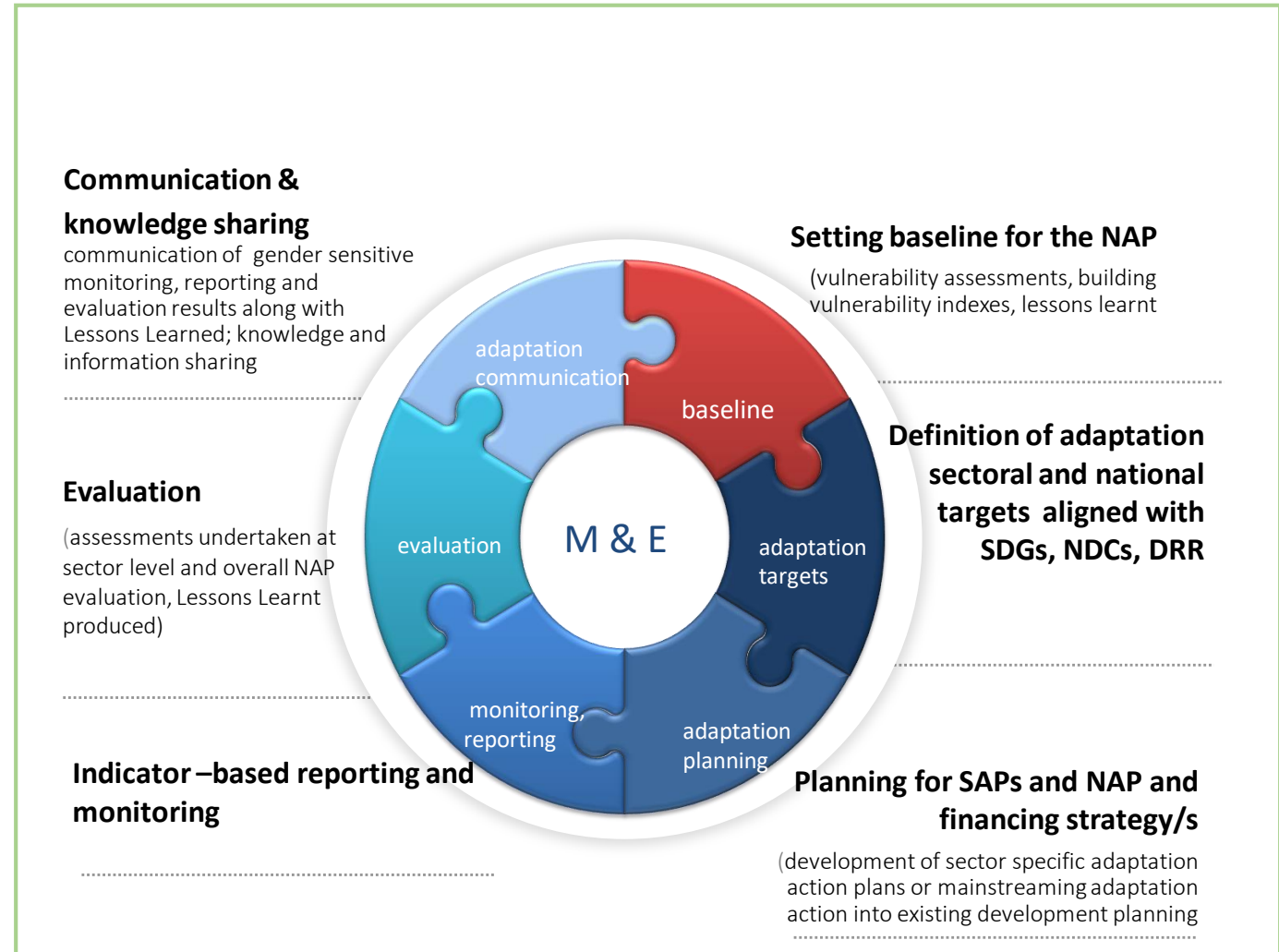
Promoting gender equality throughout the Country

Programming

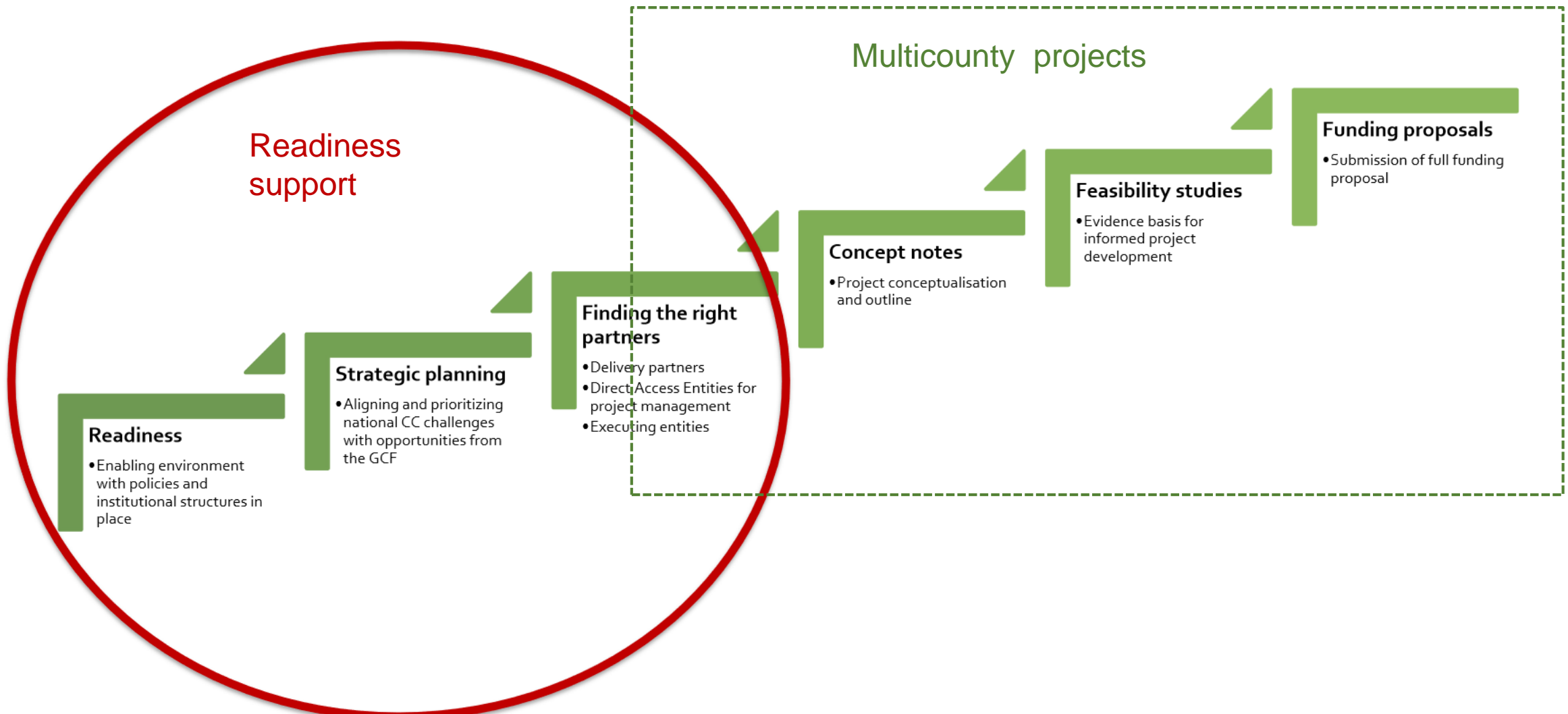
- Gender mainstreaming - central to the GCF's objectives and guiding principles, including through engaging women and men of all ages.
- Incorporation of gender dimension into the structure and operation of NDA and its CC Coordination Mechanism.
- Gender equality mainstreamed into Republic of Moldova's Country Programme ensuring compliance with national gender equality commitments.
- It is an element of country ownership.
- It is a mandatory component to be considered in all GCF project proposals and ensures a gender – responsive approach with regard to adaptation action.
- GCF projects enhance women as well as men opportunities in technology transfer to mitigate climate impact and build climate resilience.

M&E of Country Programme adaptation implementation

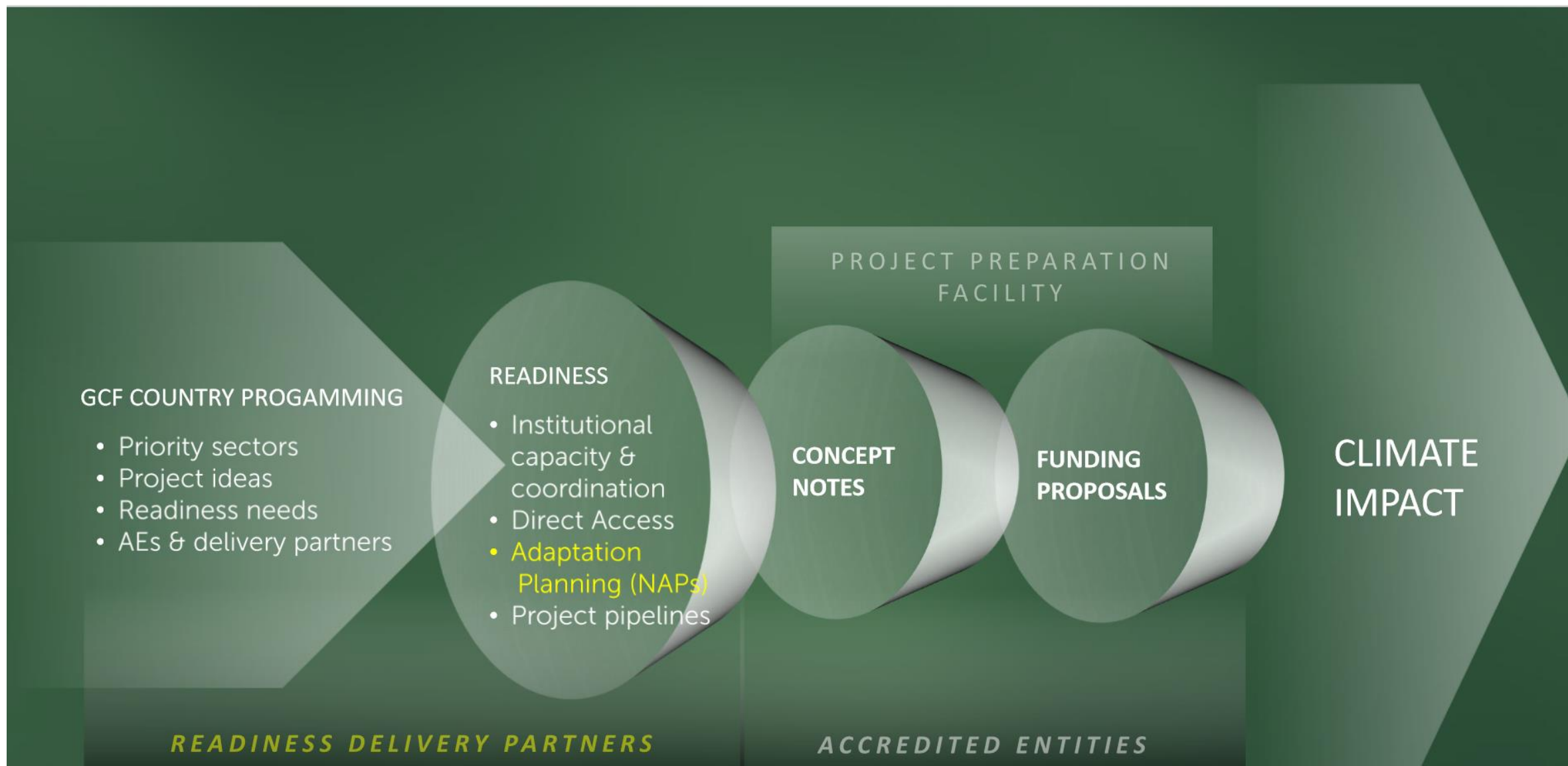
- The CP updated once a year or as needed;
- The NDA communicates the updated CP to GCF;
- The monitoring and evaluation of GCF implemented projects/programs will be streamlined into adaptation M&E framework;
- Each project will be subject of interim and final evaluations;
- The major contribution of adaptation interventions implemented through the GCF projects will be evaluated within the respective NAP.



Where we are in cooperation with GCF



The GCF Programming cycle





Thank you for the attention.

Contacts:

[www. portal.clima.md](http://www.portal.clima.md), www.adapt.clima.md, www.clima.md
adapt@clima.md